

**INSTRUMENT
APPROACH
CHART - ICAO**

TOWER FL200 or below 118.7

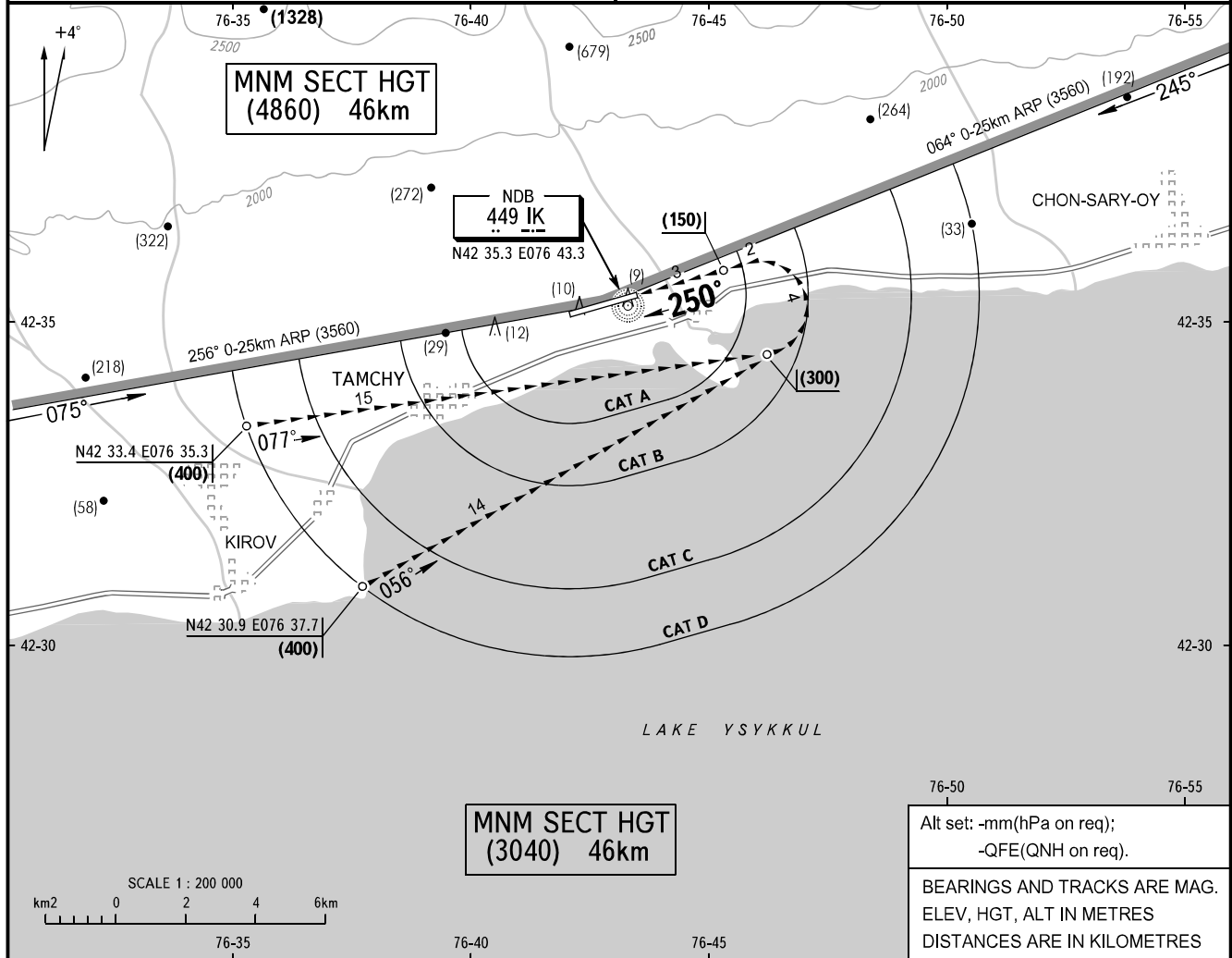
**TAMCHY, KYRGYZSTAN
YSYKKUL
CIRCLING RWY 25**

TRANSITION LEVEL: FL080

TRANSITION HEIGHT: (500)

AD ELEV: 1653.8m

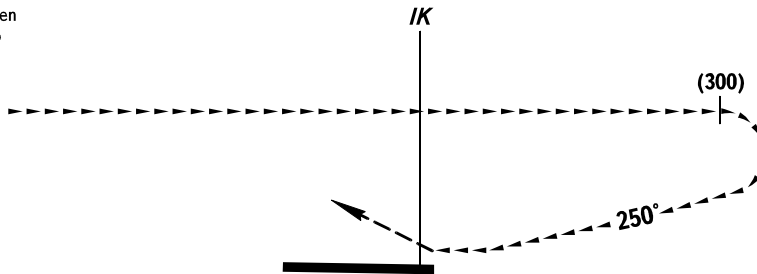
THR ELEV: 1652.8m



Alt set: -mm(hPa on req);
-QFE(QNH on req).
BEARINGS AND TRACKS ARE MAG.
ELEV, HGT, ALT IN METRES
DISTANCES ARE IN KILOMETRES

MISSED APPROACH

Climb on track 250° to (200), then turn LEFT to LEVBO climbing to FL080 and hold.



OCA/H		A	B	C	D
Visual Manoeuvring (Circling) Area					

WARNING
The radius of visual manoeuvring (circling) area for ACFT categories are as follows:
A - 3210m
B - 4900m
C - 7850m
D - 9790m

ACFT CAT		A	B	C	D
MET conditions	MDH, m	400	400		
	Cloud base, m				
	Visibility, m	5000	5000		