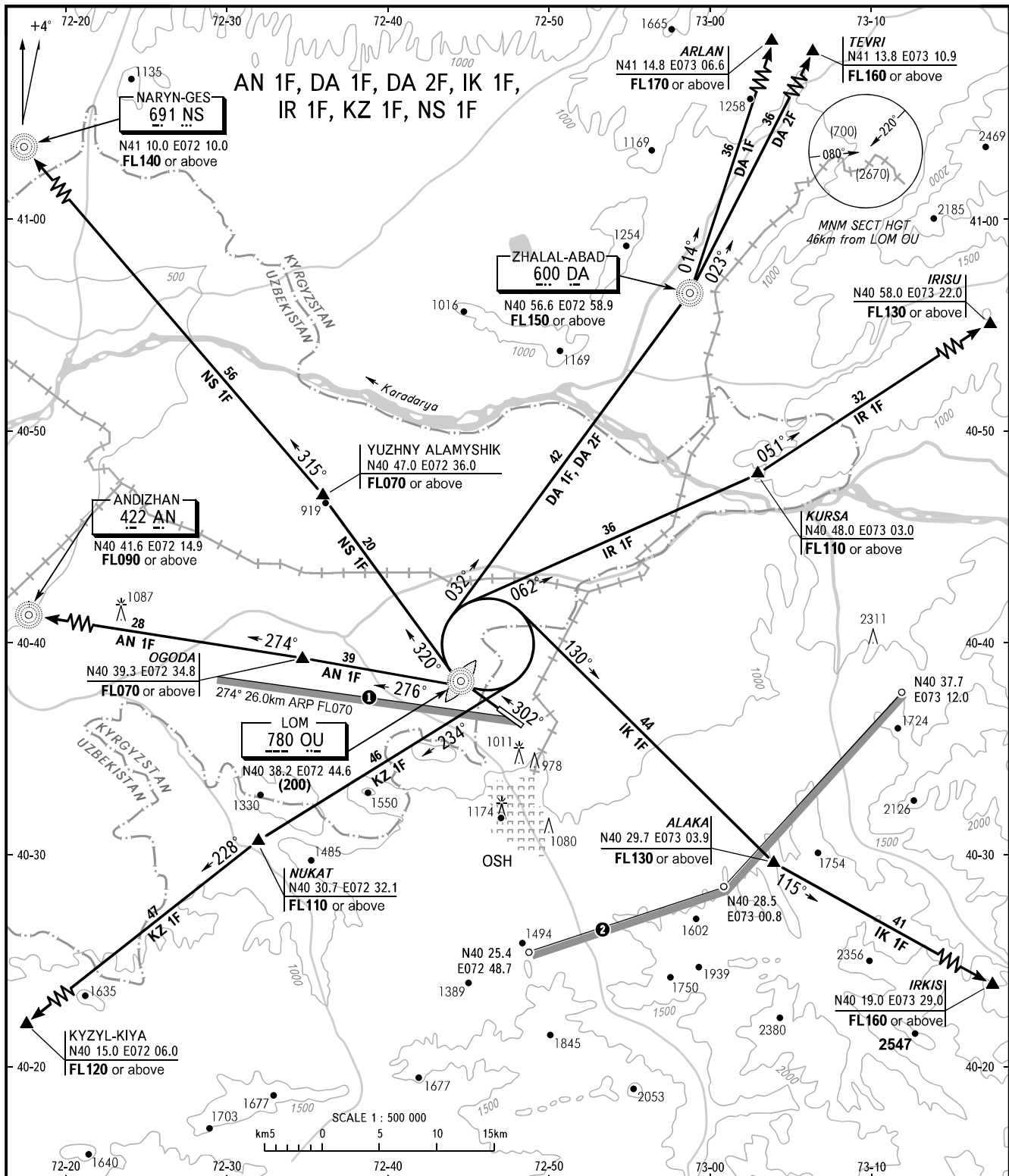


STANDARD DEPARTURE CHART  
INSTRUMENT (SID) - ICAO

TRANSITION  
HEIGHT : (600)

OSH, KYRGYZSTAN  
OSH  
RWY 30



TOWER 118.3  
APPROACH 124.2

**WARNING:**  
1. When climb gradients are less than those indicated in the table, after take-off ACFT shall carry out 360° turn to the right to join the assigned corridor.

Ground Speed	km/h	200	250	300	350	400	450	500	550
Rate of climb (Grad 7.8%)	m/s	4.4	5.5	6.5	7.7	8.7	9.8	10.8	12.0
(Grad 4.75%)	m/s	2.6	3.3	3.9	4.6	5.2	5.9	6.6	7.3

2. ① Line to the S of which flights below FL070 are PROHIBITED.  
② Line to the SE of which flights below FL130 are PROHIBITED.

BEARINGS AND TRACKS ARE MAGNETIC  
ALTITUDES, HEIGHTS AND ELEVATIONS ARE IN METRES  
DISTANCES ARE IN KILOMETRES