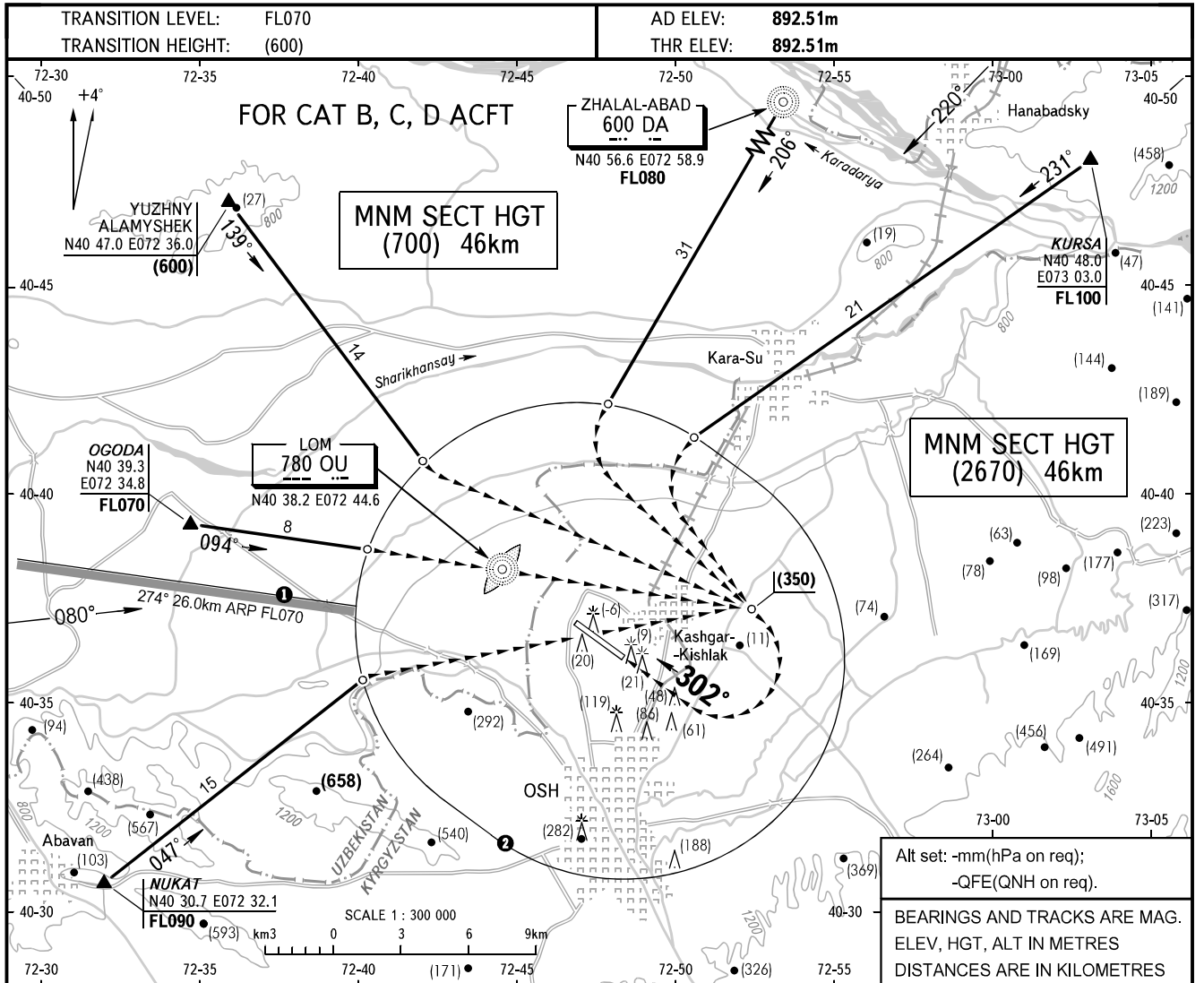


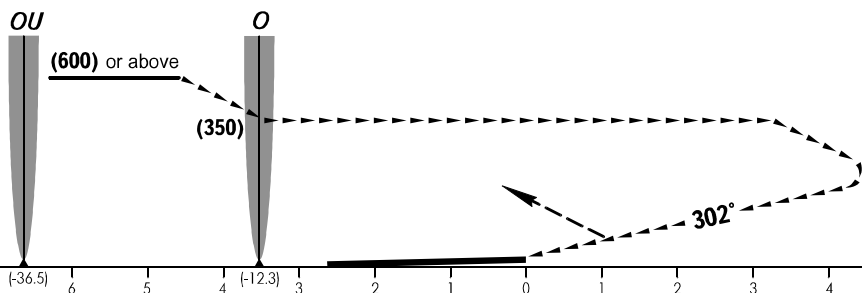
INSTRUMENT
APPROACH
CHART - ICAO

APPROACH TOWER	124.2
TOWER	118.3

OSH, KYRGYZSTAN
OSH
CIRCLING RWY 30



MISSED APPROACH
Climb on track 302° to (200), then turn RIGHT to LOM OU climbing to (600) to join holding pattern or as directed by ATC.



OCA/H		A	B	C	D	
Visual Manoeuvring (Circling) Area						
ACFT CAT		A	B	C	D	D-widebody
MET conditions	MDH, m		350	350	350	
	Cloud base, m		400	450	450	
	Visibility, m		5000	5000	5000	

WARNING:

- Line to the S of which flights below FL070 are PROHIBITED.
- The radii of visual manoeuvring (circling) area and MAX IAS for ACFT categories are as follows:
B - 4900 (250 KM/H)
C - 7850 (335 KM/H)
D - 9790 (380 KM/H)