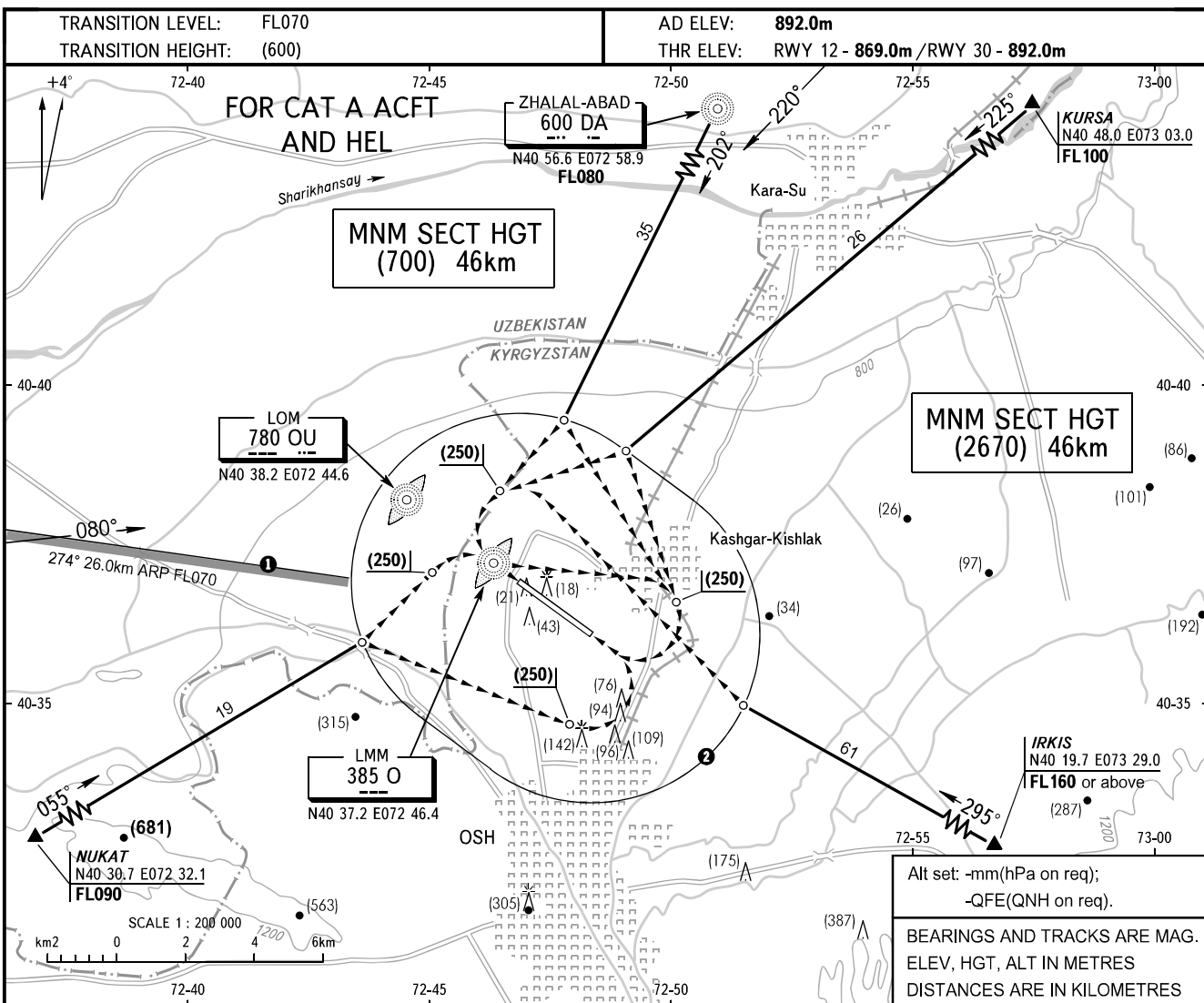


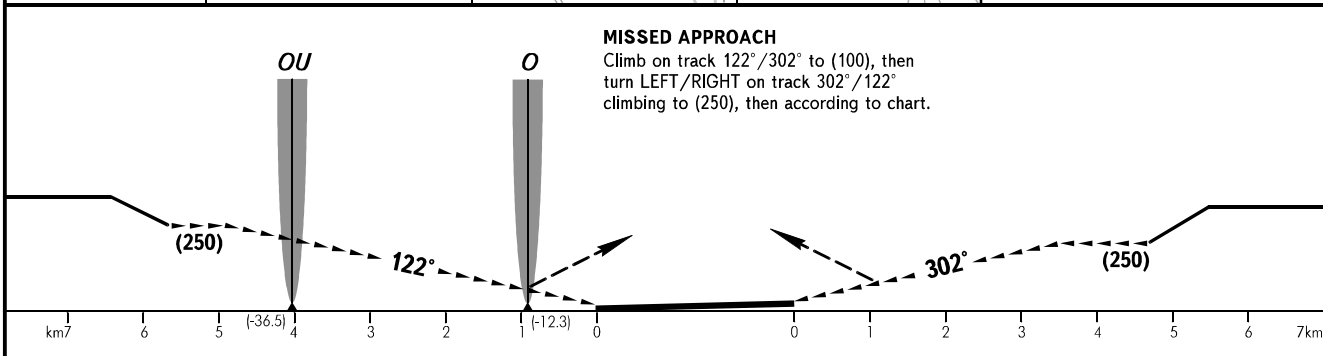
**INSTRUMENT
APPROACH
CHART - ICAO**

APPROACH	124.2
TOWER	118.3

OSH, KYRGYZSTAN
OSH
CIRCLING RWY 12/30



Alt set: -mm(hPa on req);
-QFE(QNH on req).
BEARINGS AND TRACKS ARE MAG.
ELEV, HGT, ALT IN METRES
DISTANCES ARE IN KILOMETRES



OCA/H		A	B	C	D
Visual Manoeuvring (Circling) Area					
ACFT CAT		A	HEL		
MET conditions	MDH, m	250	250		
	Cloud base, m	300	300		
	Visibility, m	3000	2000		

WARNING:
① Line to the S of which flights below FL070 are PROHIBITED.
② The radius of visual manoeuvring (circling) area and MAX IAS for ACFT categories and HEL are as follows:
A - 3120 (185 KM/H)

CHANGE: FL